

To realize the relieved safe traffic society, we founded "ITS Connect Promotion Consortium" for deployment of ITS Connect and are promoting R&D and FOT activities of the Cooperative Driving Support systems which utilize an ITS dedicated frequency band.

OBJECTIVE

- Creating and maintaining the technical specifications for message set, security, interoperability and so on
- Resolving the technical issues
- Planning and promoting the system development and operation for security and interoperability test
- Public relations and promotion

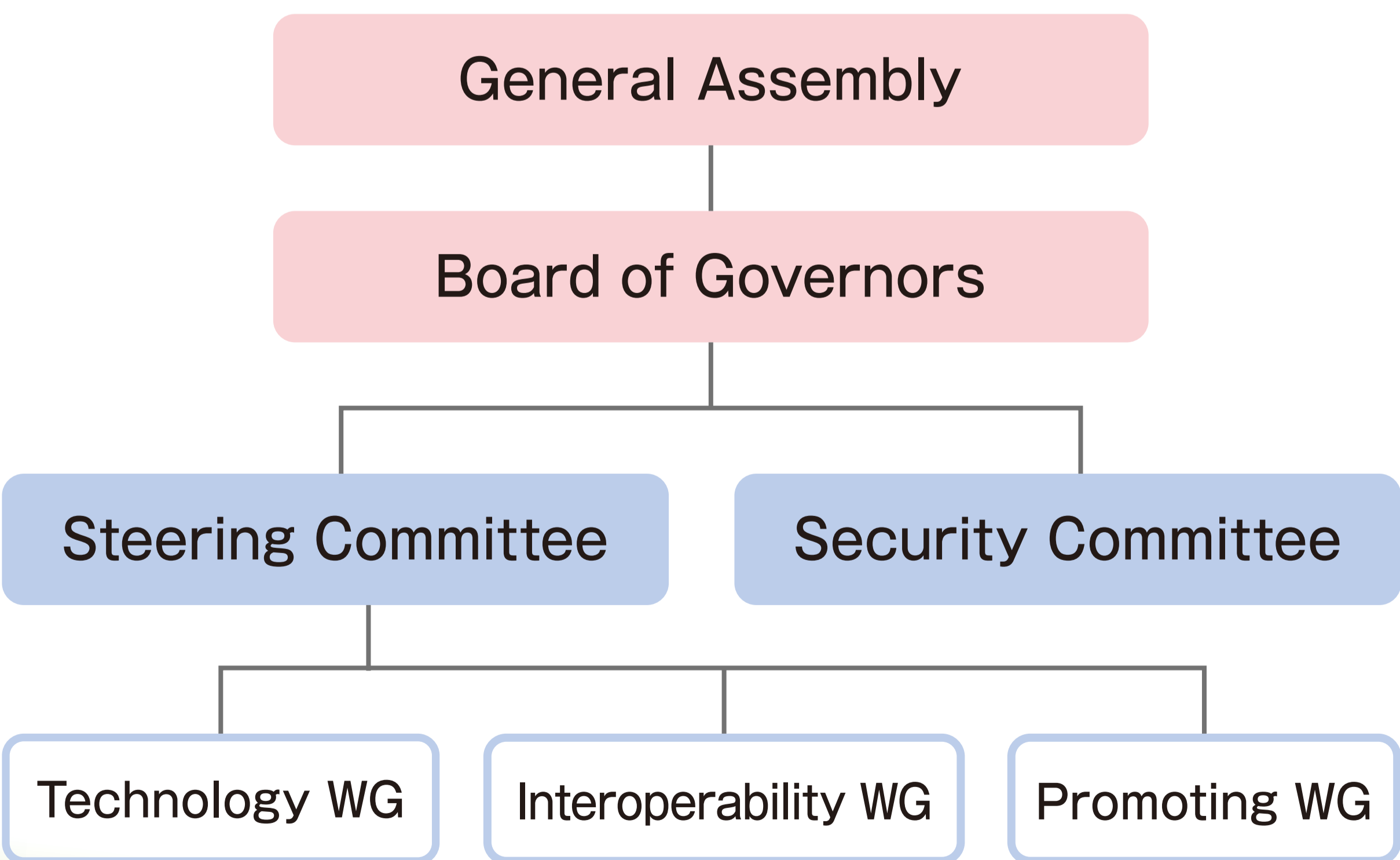
ITS Connect

- "ITS Connect" is the ITS services in Japan which utilize an ITS dedicated frequency band.
- The systems assist traffic accident prevention on the basis of transmitted information by V2X (V2V, V2I) communications.

APPLICATIONS OF ITS Connect

V2V			V2I
Collision prevention system	Approaching emergency vehicle information system	Road-works vehicle information system	Right-turn collision prevention support
Passengers getting on/off information system	Cooperative Adaptive Cruise Control	Approaching tram information system	Crossing pedestrians recognition enhancement system

ORGANIZATION



MEMBERS

- Board members**
 - DENSO CORPORATION
 - Hitachi, Ltd.
 - MITSUBISHI ELECTRIC CORPORATION
 - Pioneer Corporation
 - Panasonic Corporation
 - Renesas Electronics Corporation
 - Sumitomo Electric Industries, Ltd.
 - TOYOTA MOTOR CORPORATION
 - TOYOTA TSUSHO CORPORATION
- Regular members**
 - ANRITSU CORPORATION
 - Fuji Heavy Industries Ltd.
 - FUJITSU LIMITED
 - Japan Radio Co., Ltd.
 - Mazda Motor Corporation
 - Oki Electric Industry Co., Ltd.
 - SANYO Techno Solutions Tottori Co., Ltd.
 - Toshiba Corporation
 - Tokio Marine & Nichido Fire Insurance Co., Ltd.
- Special members**
 - National Police Agency
 - Ministry of Internal Affairs and Communications
 - Ministry of Economy, Trade and Industry
 - Ministry of Land, Infrastructure, Transport and Tourism
 - ITS related 12 organizations which support ITS Connect Consortium