



# ITS Connect: a good friend to any driver



**Making your usual drive much safer.**  
**ITS Connect is a technology**  
**that addresses people's wishes.**



ITS Connect supports your safe driving with providing the information of oncoming car or pedestrians at the intersection by connecting the cars and traffic signals.



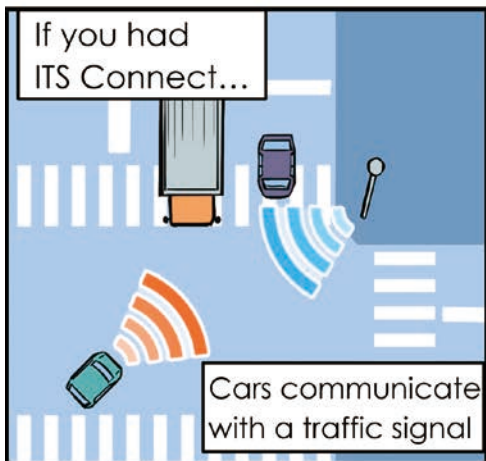
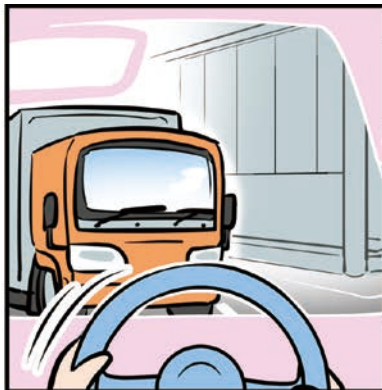
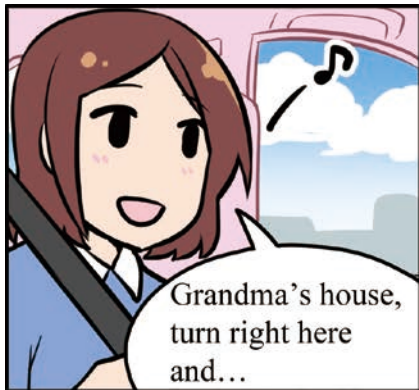


Connecting traffic signals and cars (drivers)  
Road-to-car communication

Connecting cars (drivers) to other cars (drivers)  
Car-to-car communication

# When you turn right at an intersection...

You suddenly see a car from behind a car. Have you had such a heart-stopping experience?



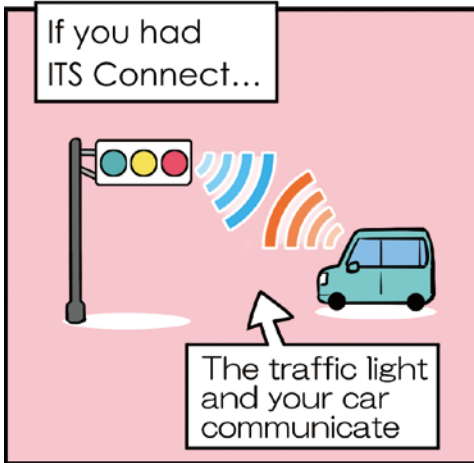
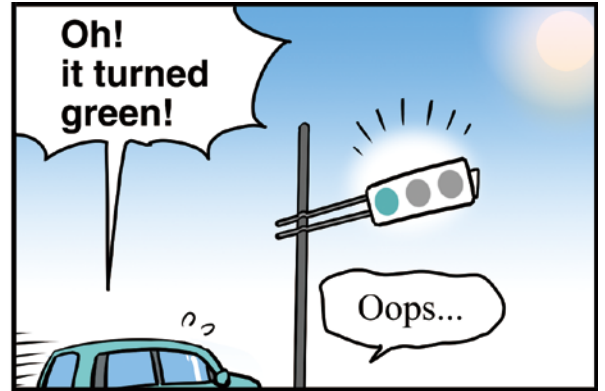
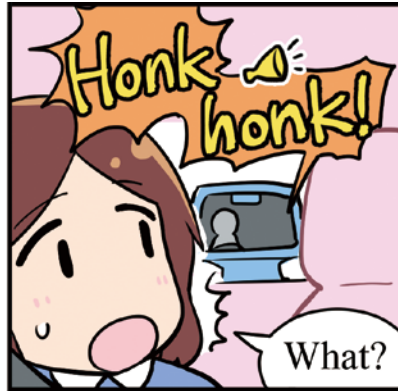
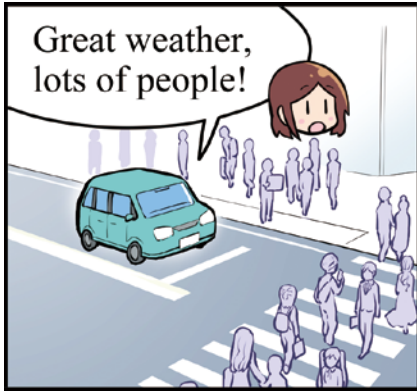
You can know there is a car coming from a blind spot.



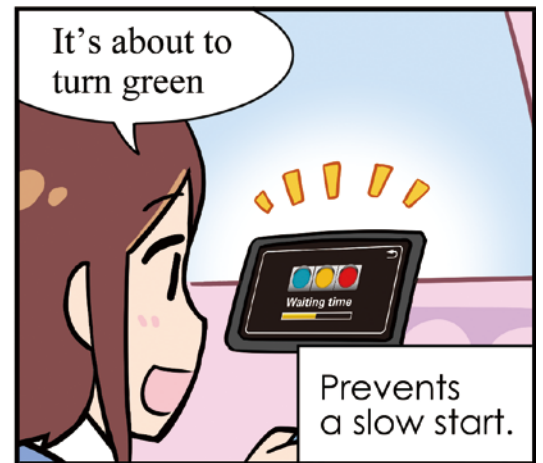
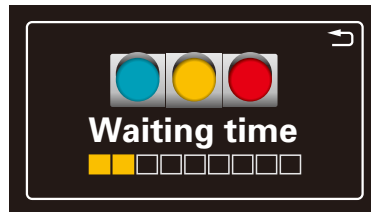
If the driver turns right, ITS Connect alerts you being aware of an oncoming car from blind spot, or pedestrians.

# While stopping at a red light

Have you ever had other drivers honk their horn at you when the light turned green?



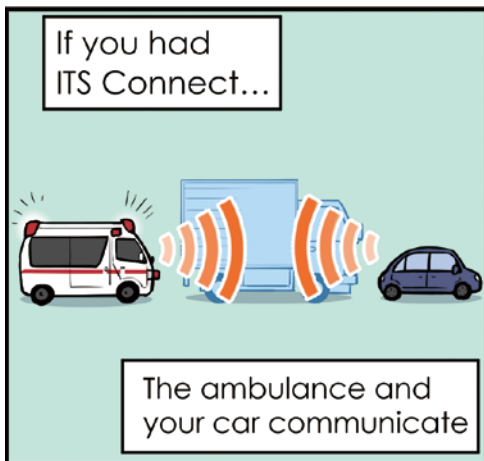
And you can know how long to wait.



ITS Connect tells you approximately how long to wait.

# When an ambulance comes from behind you

Have you ever struggled to give way?



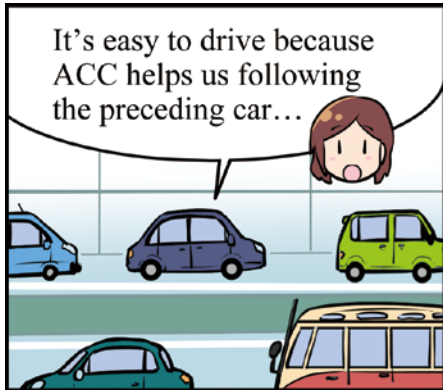
ITS Connect displays the direction of the ambulance and the distance.



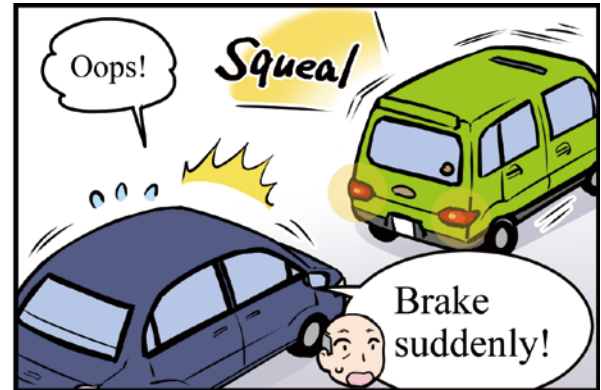
Even in traffic congestion and noise, you will see the location and direction of ambulance.

# On an expressway

You put on the brakes too frequently because you are hard to gauge the distance in front of you.



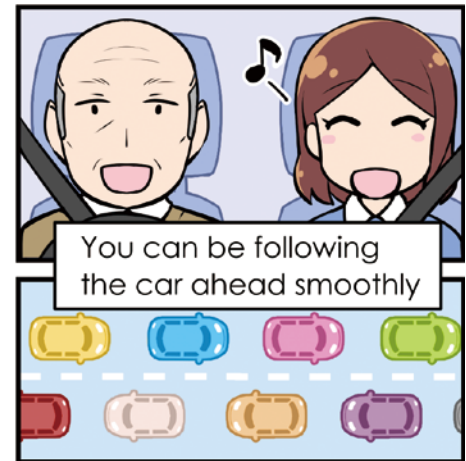
ACC: Adaptive Cruise Control: driving at a fixed speed, controlling the distance between the car ahead



You can stay the optimal distance from the car ahead, with the CACC.



CACC: Cooperative Adaptive Cruise Control: Adjustment of the distance between cars using information provided by the preceding car



ITS Connect communicates with the car ahead of you, enabling you to follow the car more comfortably.

-To find out more -> [watch the video](#) Japanese only

# ITS Connect Promotion Consortium / Member List

## Board Members

DENSO CORPORATION	Sumitomo Electric Industries, Ltd.
Hitachi, Ltd.	TOYOTA MOTOR CORPORATION
KYOCERA Corporation	TOYOTA TSUSHO CORPORATION
Renesas Electronics Corporation	

## Regular Members

ALPS ALPINE CO., LTD.	Mazda Motor Corporation	Socionext Inc.
ANRITSU CORPORATION	Micware Co., Ltd.	SUZUKI MOTOR CORPORATION
FUJITSU LIMITED	MITSUBISHI ELECTRIC CORPORATION	Toshiba Information Systems (Japan) Corporation
Hino Motors, Ltd.	NIPPON SIGNAL CO.,LTD.	Transportation Research Institute Co.,Ltd.
ISUZU MOTORS LIMITED	Ok Electric Industry Co., Ltd.	UD Trucks Corporation Co., Ltd.
JRC Mobility Inc.	Panasonic Automotive Systems Co.,Ltd.	
JVCKENWOOD Corporation	Panasonic Cycle Technology Co., Ltd.	

## Special Members

National Police Agency	Association of Radio Industries and Businesses	Japan Auto Parts Industries Association
Ministry of Internal Affairs and Communications	Highway Industry Development Organization	Japan Electronics and Information Technology Industries Association
Ministry of Economy, Trade and Industry	ITS Japan	National Institute of Advanced Industrial Science and Technology
Ministry of Land, Infrastructure, Transport and Tourism/Road Bureau	ITS Technology Enhancement Association	National Institute of Information and Communications Technology
Ministry of Land, Infrastructure, Transport and Tourism/Logistics and Road Transport Bureau	Japan Automobile Importers Association	UTMS Society of Japan
	Japan Automobile Manufacturers Association, Inc.	Vehicle Information and Communication System Center

As of June 2025



## ITS Connect Promotion Consortium

3-13, Konan 2-chome, Minato-ku, Tokyo

<https://www.itsconnect-pc.org/>

### Notes;

(1) ITS Connect is a system that operates by receiving data from compatible devices installed on roads (at intersections) and communication devices installed in vehicles.

The system operates only where there are communications means in the vicinity of vehicles (ITS Connect compatible roadside devices, vehicles equipped with onboard devices, etc.).

((2) The system uses wireless communications, and radio wave conditions or other circumstances may cause:

(i) Failure to provide proper displays or information, and (ii) Inability to convey information relating to one's own vehicle to other communications parties in the area.

(3) Information provided by ITS Connect is only a support function. Guidance information should not be excessively relied on, and drivers must pay attention to road conditions and drive safely at all times.

Proper displays and information may not be provided depending on the status or breakdown of other communications parties' devices (including ITS Connect compatible roadside devices and vehicles with onboard devices), suspension of functions because of maintenance, or the status of one's own vehicle.

(5) It is assumed that ITS Connect compatible devices will be used in Japan only.