



ITS Connect: a good friend to any driver

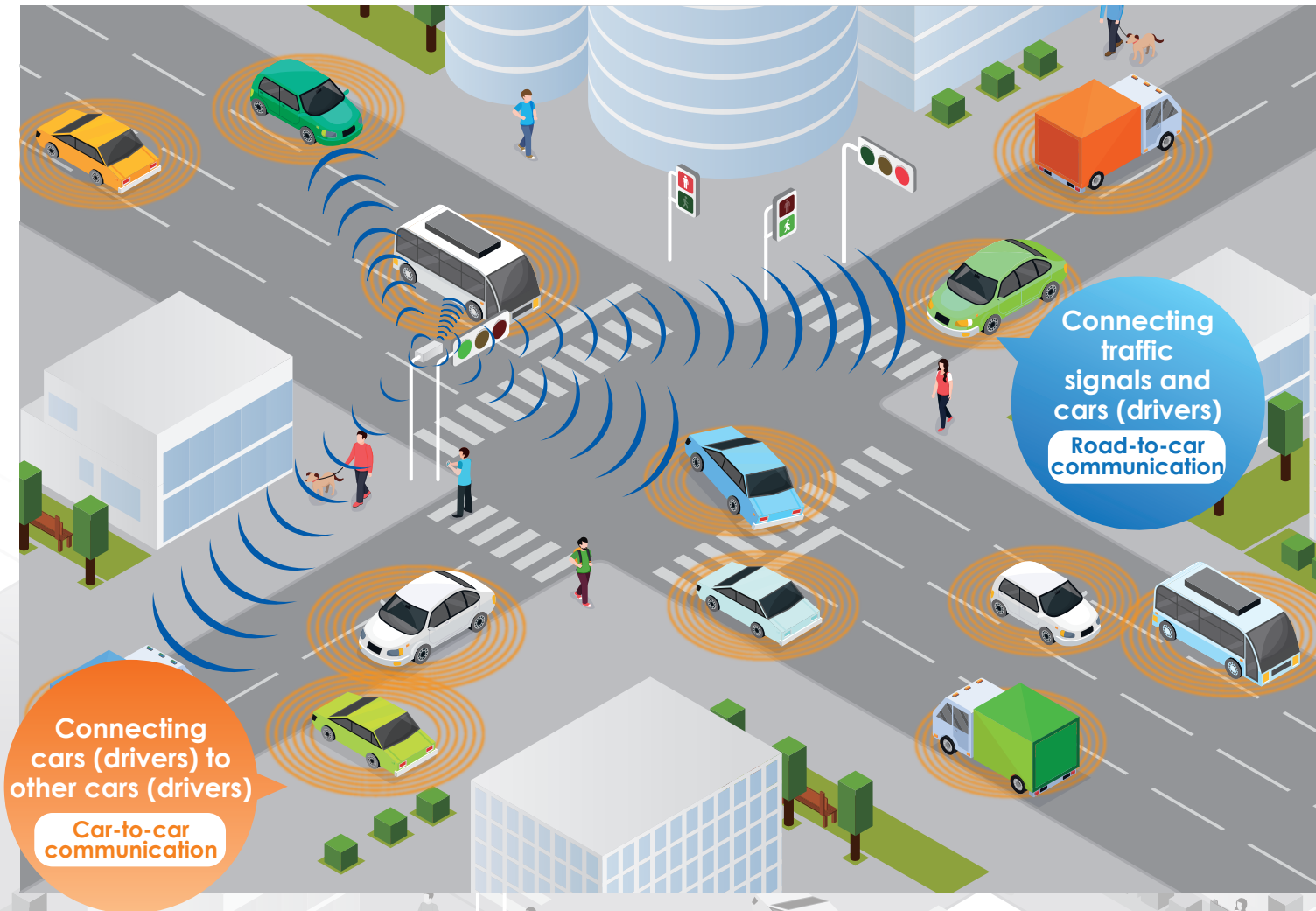


Making your usual drive much safer.
ITS Connect is a technology
that addresses people's wishes.



ITS Connect supports your safe driving with providing the information of oncoming car or pedestrians at the intersection by connecting the cars and traffic signals.





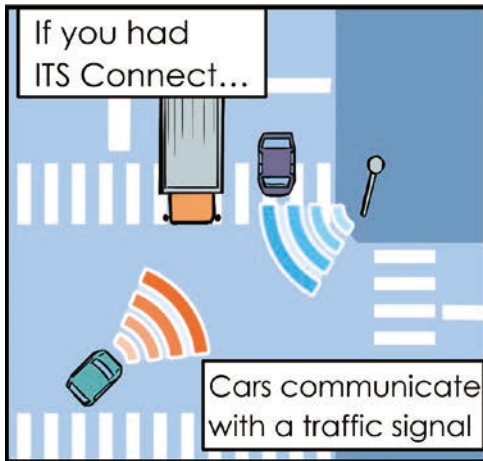
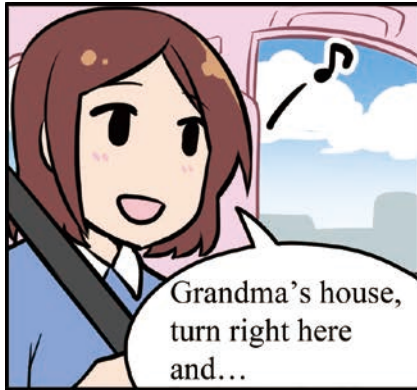
Connecting
cars (drivers) to
other cars (drivers)

Car-to-car
communication

Connecting
traffic
signals and
cars (drivers)
Road-to-car
communication

When you turn right at an intersection...

You suddenly see a car from behind a car. Have you had such a heart-stopping experience?



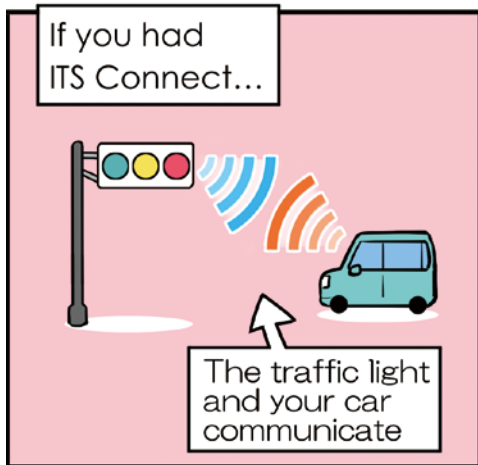
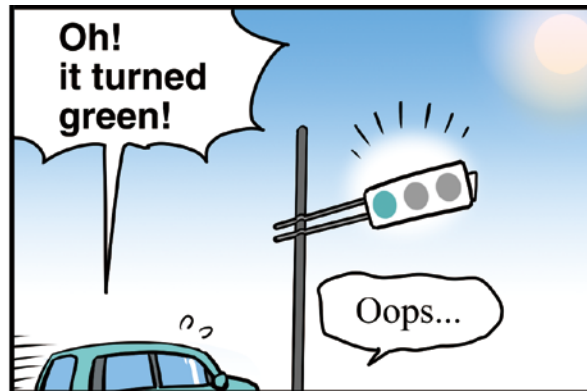
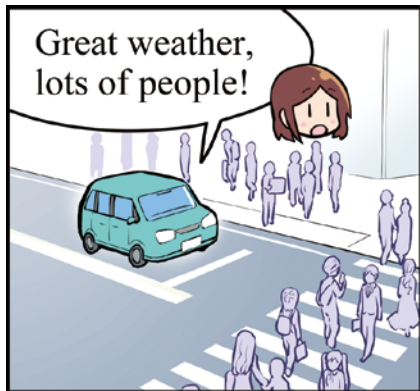
You can know there is a car coming from a blind spot.



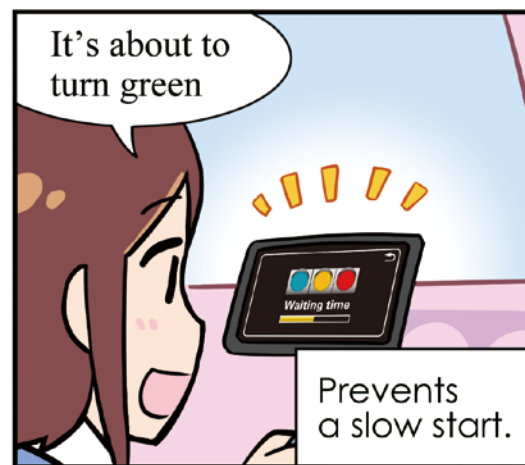
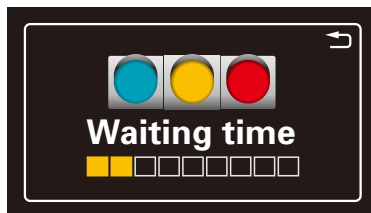
If the driver turns right, ITS Connect alerts you being aware of an oncoming car from blind spot, or pedestrians.

While stopping at a red light

Have you ever had other drivers honk their horn at you when the light turned green?



And you can know how long to wait.



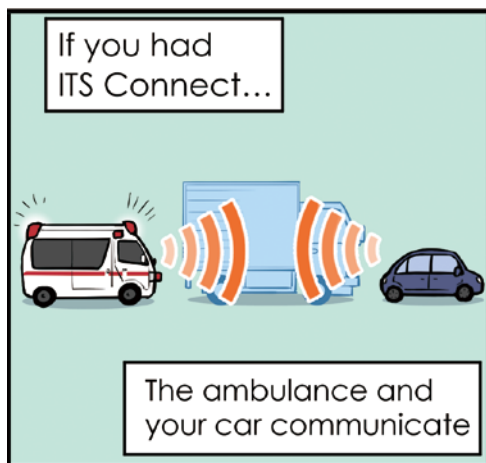
ITS Connect tells you approximately how long to wait.

-To find out more - [watch the video](#) (Toyota Motor Corporation)

Japanese only

When an ambulance comes from behind you

Have you ever struggled to give way?



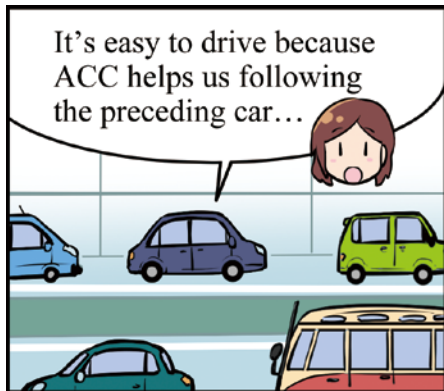
ITS Connect displays the direction of the ambulance and the distance.



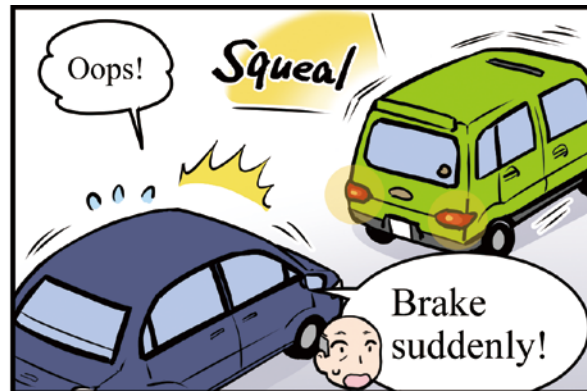
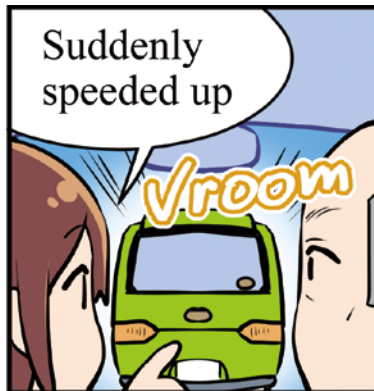
Even in traffic congestion and noise, you will see the location and direction of ambulance.

On an expressway

You put on the brakes too frequently because you are hard to gauge the distance in front of you.



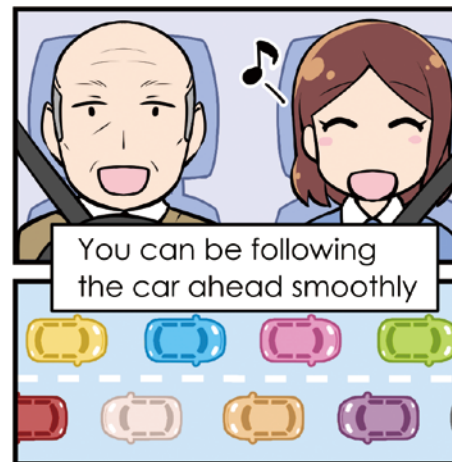
ACC: Adaptive Cruise Control: driving at a fixed speed, controlling the distance between the car ahead



You can stay the optimal distance from the car ahead, with the CACC.



CACC: Cooperative Adaptive Cruise Control: Adjustment of the distance between cars using information provided by the preceding car



ITS Connect communicates with the car ahead of you, enabling you to follow the car more comfortably.

-To find out more - [watch the video](#)

Japanese only

ITS Connect Promotion Consortium / Member List

Board Members	DENSO CORPORATION Hitachi, Ltd. KYOCERA Corporation Renesas Electronics Corporation	Sumitomo Electric Industries, Ltd. TOYOTA MOTOR CORPORATION TOYOTA TSUSHO CORPORATION	
Regular Members	ALPS ALPINE CO., LTD. ANRITSU CORPORATION FUJITSU LIMITED Hino Motors, Ltd. ISUZU MOTORS LIMITED JRC Mobility Inc. JVCKENWOOD Corporation	KDDI CORPORATION Mazda Motor Corporation Micware Co., Ltd. MITSUBISHI ELECTRIC CORPORATION NIPPON SIGNAL CO.,LTD. Oki Electric Industry Co., Ltd. Panasonic Automotive Systems Co.,Ltd.	Panasonic Cycle Technology Co., Ltd. Socionext Inc. SUZUKI MOTOR CORPORATION Tokio Marine & Nichido Fire Insurance Co.,Ltd. Toshiba Information Systems (Japan) Corporation UD Trucks Corporation Co., Ltd.
Special Members	National Police Agency Ministry of Internal Affairs and Communications Ministry of Economy, Trade and Industry Ministry of Land, Infrastructure, Transport and Tourism/Road Bureau Ministry of Land, Infrastructure, Transport and Tourism/Logistics and Road Transport Bureau	Association of Radio Industries and Businesses Highway Industry Development Organization ITS Japan ITS Technology Enhancement Association Japan Automobile Importers Association Japan Automobile Manufacturers Association, Inc.	Japan Automobile Research Institute Japan Auto Parts Industries Association Japan Electronics and Information Technology Industries Association National Institute of Advanced Industrial Science and Technology National Institute of Information and Communications Technology UTMS Society of Japan Vehicle Information and Communication System Center

As of April 2025



ITS Connect Promotion Consortium

3-13, Konan 2-chome, Minato-ku, Tokyo

<https://www.itsconnect-pc.org/>

Notes;

(1) ITS Connect is a system that operates by receiving data from compatible devices installed on roads (at intersections) and communication devices installed in vehicles.

The system operates only where there are communications means in the vicinity of vehicles (ITS Connect compatible roadside devices, vehicles equipped with onboard devices, etc.).

((2) The system uses wireless communications, and radio wave conditions or other circumstances may cause:

(i) Failure to provide proper displays or information, and (ii) Inability to convey information relating to one's own vehicle to other communications parties in the area.

(3) Information provided by ITS Connect is only a support function. Guidance information should not be excessively relied on, and drivers must pay attention to road conditions and drive safely at all times.

Proper displays and information may not be provided depending on the status or breakdown of other communications parties' devices (including ITS Connect compatible roadside devices and vehicles with onboard devices), suspension of functions because of maintenance, or the status of one's own vehicle.

(5) It is assumed that ITS Connect compatible devices will be used in Japan only.